

## Swing check valve Figure 204, DN80-DN600

Rensberg swing check valves Figure 204 are mainly being used as a check valve on sewage pipelines. The design of this valve is full bore and enables a fast closure to avoid water hammer events. A counterweight with lever can be mounted, if required with a safety-protection cap.






### Features:

- DN80-300: Face to face EN558-1 Serie 10
- DN350-600: Face to face DIN3202 F6
- Flanged according PN-EN 1092-2:1999
- 250µm Epoxy coating, 310µm on request
- Standard with Stainless Steel bolts
- Product of European Origin
- Resilient seat, with EPDM or NBR rubber
- No special maintenance required
- Both vertical and horizontal mounting possible

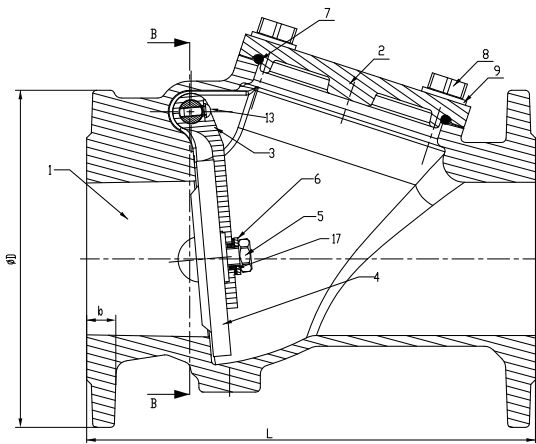
Article	Body	Seal	Pressure	Lining	Temp. (°C)
Figure 204 / GGG-EPDM	Ductile iron JS1030	EPDM	PN10	Epoxy	-30°C/70°C
Figure 204 / GGG-NBR	Ductile iron JS1030	NBR	PN10	Epoxy	-10°C/70°C

### Extra options:

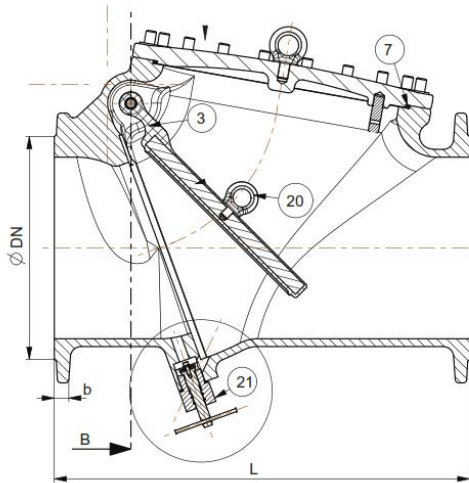
		
<p><b>Custom RAL colors</b> can be selected for the valve body and cover</p>	<p><b>Counterweight</b> Allows to reduce the time of closure of the valve.</p>	<p><b>Protection cap</b> Provides a safe enclosure of the counterweight.</p>

## Swing check valve Figure 204, DN80-DN600

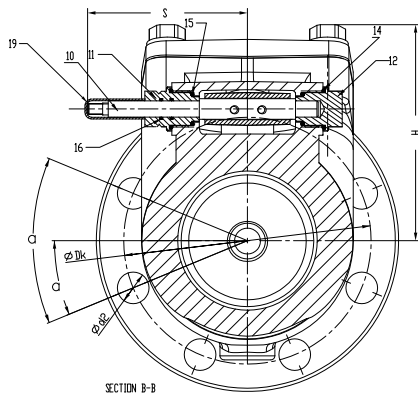
Side view DN80-DN300



Side view DN350-DN600



Front view DN80-DN600



Item	Part	Material
1	Body	Ductile iron JS1030
2	Cover	Ductile iron JS1030
3	Lever	Ductile iron JS1030
4	Disc	Ductile iron JS1030
5/8/13/20	Bolt	Stainless steel A2
6	Nut	Stainless steel A2
7/17	Gasket	EPDM NBR
9	Washer	Stainless steel A2
10	Shaft	Stainless steel X20Cr13
11/12	Bearing	Brass CW614N
14/15/16	O-ring	EPDM NBR
18	Ring	Messing CW614N
19	Cap	Polymer
20	Eye	Stainless steel A2
21	Bypass	Brass CW614N

## Swing check valve Figure 204, DN80-DN600

DN	PN	L	D	Dk	n	d2	b	H	S	Weight(Kg)
80		241	200	160	8	19	19	150	118	16,0
100		292	220	180	8	19	19	158	118	21,0
150		356	285	240	8	23	19	205	150	41,0
200	PN10	495	340	295	8	23	20	270	200	85,0
250		622	400	350	12	23	22	315	235	125,0
300		698	460	400	12	23	24,5	370	235	160,0
350		800	505	460	16	23	26,5	427	295	300,0
400		900	565	515	16	28	28	461	330	395,0
500		1100	670	620	20	28	31,5	530	385	613,0
600		1300	780	725	20	31	36	600	445	830,0